

Early Learning and Childcare Audit 2019

scma[®] Scottish
Childminding
Association
committed to quality childcare

**An overview (by local authority) of childminders providing funded
ELC hours to eligible two, three and four-year olds in Scotland.**

October 2019



Childminding is consistently one of the highest rated forms of childcare in Scotland by provider type, through independent inspection by the Care Inspectorate. 92% of childminders achieve 'Good' or higher ratings across all quality criteria¹.

There are currently around 4800 childminders in Scotland, providing childcare for almost 33,000 children.

Approximately 4000 childminders (83%) are members of the Scottish Childminding Association (SCMA); 70% of SCMA members have been childminders for more than five years and 45% for more than ten years.

Our childminders are a high-quality, diverse workforce, often with extensive life experience gained prior to entering childcare. Previous careers include nursery/early years workers, teachers, marketing, banking, dieticians, administrators, project co-ordinators and hair stylists. A common workforce entry point is after having started a family and seeking a more flexible and fulfilling career, supporting other parents/carers and with improved work/life balance.

CHILDMINDING...

- provides a high-quality family childcare experience in a home-based environment, where every setting is unique to meet the needs of children and their families
- has one of the highest quality ratings by inspection and the lowest adult-to-child ratios of all forms of childcare in Scotland^{1,2}
- is eligible for 1140 hours of funded Early Learning and Childcare (ELC) in Scotland from August 2020 from childminders who meet the criteria in the National Standard

WHY CHILDMINDING IS IMPORTANT...

- it increases parental choice
- it can be particularly helpful in supporting children with additional support needs or children who may struggle in a larger setting
- it enables children to learn and play with other ages – providing opportunities to enhance early learning, confidence and social development – and supports parents, families and communities^{3,4}
- it provides strong continuity of care and follows the eight Wellbeing Indicators for childcare and schools in Scotland^{5,6}
- it is flexible and can be blended with other forms of childcare (i.e. nursery) to provide 'wrap-around' childcare

[1] Early Learning & Childcare Statistics 2018, Care Inspectorate, September 2019 [2] National Care Standards, Scottish Government. [3] A Review of the Research on Childminding: Understanding Children's Experiences in Home-Based Childcare Settings, Ang et al, Early Childhood Educ J (2017) [4] SCMA Community Childminding service. [5] Health & Social Care Standards, Scottish Government [6] Getting It Right For Every Child, Scottish Government

INTRODUCTION

Early Learning and Childcare (ELC) policy aims to deliver 1140 'funded hours' of childcare for all three and four-year olds and eligible two-year-olds in Scotland by August 2020. This is an expansion of the 600 hours of 'funded hours' first made available for these ages in 2014.

This report, published by the Scottish Childminding Association (SCMA), provides an annual snapshot of local authorities' progress in approving childminders as 'partner providers' in the delivery of ELC.

As an organisation, SCMA is very supportive of ELC policy. We believe it has the potential to help thousands of families across Scotland with their childcare costs and will help to reduce inequalities in areas of deprivation. However, we also believe that in implementing this national policy at a local level, Scottish local authorities should respect parental preferences and ensure that all forms of childcare, including childminding, can be accessed equitably by parents for their funded hours entitlement in line with the 'provider-neutral' nature of the policy.

Against this background, SCMA has been working constructively and collaboratively with local authorities and the Scottish Government to support implementation of the policy.

The 2019 report has found that with less than a year to go until 1140 hours of ELC should be available to parents/carers nationally –

- only 12.6% of childminders in Scotland (n=599) have been approved by local authorities to deliver 'funded hours' for all three and four-year olds (and even less (4.2%; n=199) are currently actually delivering funded hours during phased expansion);
- only 16.2% of childminders in Scotland (n=773) have been approved by local authorities to deliver funded hours for eligible two-year olds (and even less (3.3%; n=156) are currently actually delivering funded hours during phased expansion).

In parallel –

- while progress has been made by Scottish local authorities in recruiting an additional 4069 staff nationally to deliver ELC expansion in their nurseries, the childminding workforce in Scotland continues to decline and this is

accelerating (-14.5% since July 2014 and -5.8% since July 2018); workforce losses and shifts across other providers in the childcare and social care workforce are also being reported;^{7,1,8}

- SCMA continues to receive anecdotal reports from members that childminders have been leaving childminding, either to work in local authority nurseries or completely, as a result of ELC expansion;
- a recent SCMA membership survey found that 21% (1 in 5) of childminders who responded reported that they had lost families from childminding due to not being able to offer funded hours⁹. Changing childcare providers can be distressing and disruptive for children and families and breaks the continuity of care. The survey also found that 67% of respondents were interested in delivering funded hours;
- the Scottish Government has recently reaffirmed its commitment to enabling parents to choose childminding as an option for receiving their funded hours in the Programme for Government 2019-20.¹⁰

We know that a number of local authorities understand the value of childminding and have made good progress in approving childminders, with staff around the country working hard to ensure that this landmark policy happens.

Implementing an ambitious policy of this scale, and to deliver maximum benefit, presents challenges for us all. However, five years after 600 funded hours were made available, the audit results show that nationally, and in many cases locally, the number of childminders who are currently involved in ELC delivery is both deeply worrying and unacceptably low.

The decline in the childminding workforce is also becoming critical. With only ten months to go until 1140 hours are made available nationally, urgent action is required to adjust the balance of childcare providers in delivering funded hours (where this is lacking) and to ensure that we do not lose sight of parental choice regarding which childcare may be best for the child and to support the delivery of the Programme for Government 2019-20.

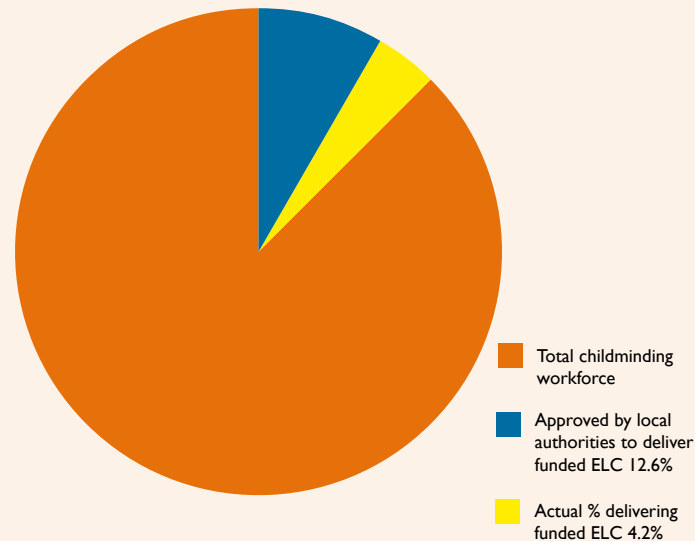
Graeme McAlister
Chief Executive, Scottish Childminding Association

KEY FINDINGS

Details of individual local authority returns and comparisons against 2018 are included within the Appendices.

Three and four-year olds

- 12.6% of the childminding workforce in Scotland (n = 599) has been approved by local authorities to deliver funded hours for three and four-year olds. This has increased from 2.3% (n = 119) in 2018
- however only 4.2% of the childminding workforce in Scotland (n = 199) are currently actively delivering funded hours for three and four-year olds during phased expansion. This has increased from 1.1% (n = 57) in 2018
- 404 three and four-year olds in Scotland are currently receiving funded hours with childminders. This has increased from 89 in 2018



Local authorities where no childminders have been approved to deliver funded hours

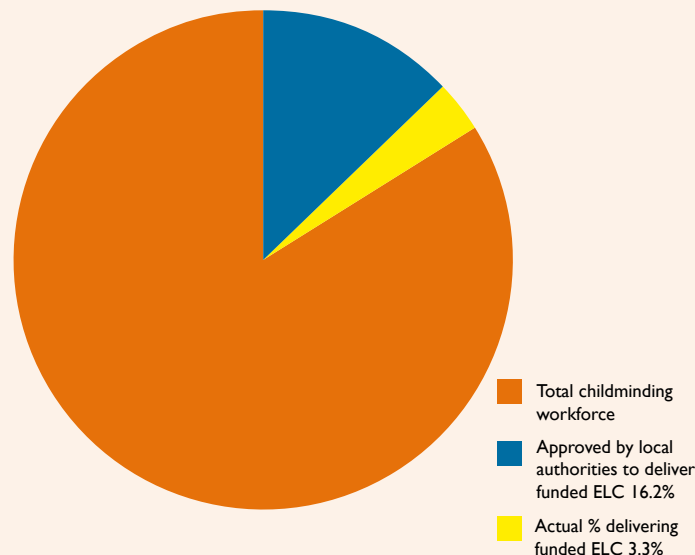
- Four local authorities have no childminders approved as partner providers to deliver funded hours for three and four-year olds (and there are a further eight local authorities where the number of childminders approved are still in single figures)
- Two local authorities have no childminders approved as partner providers to deliver funded hours for eligible two-year-olds (and there are a further nine local authorities where the number of childminders approved are still in single figures)

Impact Assessments

- While some local authorities have conducted Environmental Impact Assessments for ELC expansion, none are understood to have specifically assessed the impact of their ELC expansion plans, investment and decision-making on childminding services in their area

Eligible two-year olds

- 16.2% of the childminding workforce in Scotland (n = 773) has been approved by local authorities to deliver funded hours for eligible two-year-olds. This has increased from 12.6% (n = 639) in 2018
- however only 3.3% of the childminding workforce in Scotland (n = 156) are currently actively delivering funded hours for eligible two-year-olds during phased expansion; this is only marginally up on 2018 (2.8%; 144)
- 196 eligible two-year-olds in Scotland are currently receiving funded hours with childminders. This has increased from 144 in 2018



Childminding Workforce

- 4768 childminders currently operate professional childminding services in Scotland. This is a decrease of 5.8% (n=296) within the last year. During the five-year period of July 2014 – July 2019 the childminding workforce in Scotland has declined by 14.5% (n= 809) and the annual decline in the workforce has accelerated within the last three years.

RECOMMENDATIONS

1. While recognising the provider-neutral nature of ELC policy, national guidance should be strengthened as a matter of urgency to require all local authorities to ensure a more balanced provider model within their delivery plans including all provider types (local authority, private, voluntary sector and childminding) and to avoid any bias in commissioning.

National guidance should state recommended mixes of provision, with local authorities required to provide evidence as to where this may not be possible (i.e. in remote and rural locations where ensuring a national recommended mix may not be feasible), but also providing detail of what steps may be taken to improve the mix of provision.

2. Given the very low level of local authority approval of childminders nationally, all local authorities in Scotland should be required to develop supplementary Childminding Action Plans to demonstrate how they will escalate and accelerate their inclusion of childminding in ELC delivery prior to, and beyond, August 2020.

Examples of successful inclusion of childminders in ELC delivery should be shared to support local authorities in their development of these plans, i.e. local authorities who are bringing childminders into partnership at an early stage of their 'phasing in' to prevent loss of families and adverse impact on business sustainability.

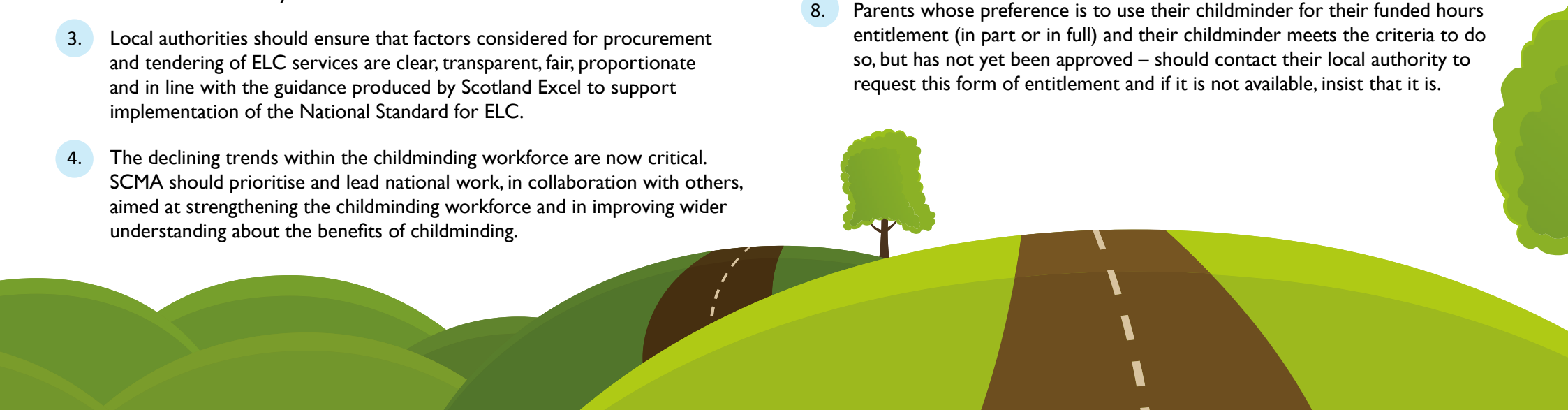
3. Local authorities should ensure that factors considered for procurement and tendering of ELC services are clear, transparent, fair, proportionate and in line with the guidance produced by Scotland Excel to support implementation of the National Standard for ELC.
4. The declining trends within the childminding workforce are now critical. SCMA should prioritise and lead national work, in collaboration with others, aimed at strengthening the childminding workforce and in improving wider understanding about the benefits of childminding.

5. The Scottish Government should support SCMA in undertaking research to understand the reasons behind the declining childminding workforce and implement targeted measures to address this.

Building on the ongoing national ELC recruitment campaign and its success in attracting staff into local authority nurseries to support ELC expansion, this should include a complementary childminding-specific national recruitment campaign aimed at promoting childminding as an attractive career and an alternative option for entering the childcare workforce.

This would be aimed at increasing recruitment into the childminding workforce and supporting diversity to support parental choice with regard to the various types of childcare available throughout Scotland, particularly in areas of deprivation where childminding provision is low and inequalities are pronounced.

6. Local authorities experiencing any difficulties in recruiting and including childminders in the ELC expansion should contact SCMA for practical support and advice. SCMA will be happy to assist you.
7. Childminders interested in delivering funded hours and uncertain how to do so should contact SCMA for support and advice.
8. Parents whose preference is to use their childminder for their funded hours entitlement (in part or in full) and their childminder meets the criteria to do so, but has not yet been approved – should contact their local authority to request this form of entitlement and if it is not available, insist that it is.



APPENDIX:

Notes on data collection and interpretation

Initial data capture commenced on 29 April 2019, through a combination of –

- direct e-mails to SCMA staff where SCMA is contracted by local authorities to deliver childminding services in their area;
- direct e-mails to local authorities where SCMA are not contracted by local authorities to deliver childminding services in their area.

A number of follow-up e-mails were sent to local authorities who had not responded during May and June 2019.

At the time of completing data capture, 29 out of 32 local authorities had responded to our information request.

However, when analysing the data it became clear that a number of local authorities had requested that we contact them again in August 2019, as the situation was very fluid on the ground and numbers were expected to change by August 2019 linked to phased expansion.

A second round of data capture commenced on 18 July, requesting an updated capture to be undertaken on 1 August 2019. A follow-up e-mail was sent to those local authorities who did not respond (including those who did not respond to the original request for information).

At the time of completing the second round of data capture, 31 out of 32 local authorities had responded.

Additional data notes and clarifications:

- Where data provided included projections of numbers expected later in August than the 1 August 2019 snapshot, these figures have been used within this report.
- The data should be interpreted with a little caution as it includes different local authority methods of reporting, based on what is currently happening i.e. Highland Council figures include all childminders achieving quality ratings of Grade 3 or above, whereas from August 2020 the requirement under the National Standard will be Grade 4 or above. Dumfries and Galloway Council also report on children aged two to five, whereas the focus of ELC is on all three and four-year olds and on eligible two-year olds.
- For information on the Care Inspectorate grading system for childminding and all other childcare providers, visit [careinspectorate.com](https://www.careinspectorate.com).



Appendix I(a): CHILDMINDERS PROVIDING FUNDED ELC HOURS IN SCOTLAND - JULY 2019: Eligible two-year olds

| Local authority area | No. of childminders operating in each local authority area as at July 2019 | No. of childminders approved to deliver funded hours for eligible two-year olds | No. of childminders currently delivering funded hours for eligible two-year olds | No. of two-year olds currently placed with these childminders | Do you give parents the option of a childminding place for their eligible two-year old? | Open choice or only if there are no nursery places available (NNPA) |
|------------------------------------|--|---|--|---|---|---|
| Aberdeen City | 161 | 29 | 14 | 15 | Yes | Open |
| Aberdeenshire | 321 | 66 | 29 | 1 | Yes | Open |
| Angus | 151 | 5 | 4 | 7 | Yes for an additional 540 hours | Open |
| Argyll and Bute | 74 | 25 | 25 | 12 | Yes | Open |
| Clackmannanshire | 53 | 12 | 4 | 4 | Yes | Open |
| Dumfries and Galloway | 111 | 41 | 14 | 9 | Yes | Open |
| Dundee | 133 | 2 | 2 | 3 | Not universally, but blended offer given to targeted families | n/a |
| East Ayrshire | 175 | 29 | 7 | 7 | Yes | Open |
| East Dunbartonshire | 120 | 3 | 3 | 3 | Yes, in our pilot centres. | Open |
| East Lothian | 120 | No response | No response | No response | No response | No response |
| East Renfrewshire | 131 | 11 | 0 | 0 | Yes | Open |
| Edinburgh City | 335 | 14 | 0 | 1 | Yes | Open |
| Falkirk | 190 | 1 | No response | 1 | No | Only in exceptional circumstances |
| Fife | 421 | 5 | 1 | 3 | Yes | Open |
| Glasgow City | 173 | 45 | 13 | 26 | Yes | Open |
| Highland** | 240 | 17 | 17 | 14 | Yes | Open |
| Inverclyde | 56 | 0 | 0 | 0 | No | No option |
| Midlothian | 85 | 41 | 5 | 7 | Yes | Open |
| Moray | 113 | 21 | 1 | 1 | Yes | Open |
| North Ayrshire | 174 | 88 | No response | 41 | Yes | Open |
| North Lanarkshire | 315 | 113 | No response | 11 | Yes | Open |
| Orkney Islands | 24 | 3 | 0 | 0 | Yes | Open |
| Perth and Kinross | 153 | 2 | No response | No response | Yes | N/A |
| Renfrewshire | 81 | 19 | 0 | 0 | Yes | Open |
| Scottish Borders | 98 | 32 | 4 | 15 | Yes | Open |
| Shetland Islands | 13 | 6 | 3 | 0 | Yes | Open |
| South Ayrshire | 86 | 1 | 0 | 0 | On request | On request |
| South Lanarkshire | 261 | 23 | 0 | 0 | No | N/A |
| Stirling | 102 | 42 | 2 | 4 | Yes | Open |
| West Dunbartonshire | 41 | No response | 0 | 0 | Yes | Open |
| West Lothian | 232 | 77 | 8 | 11 | Yes | NNPA or if child already attends childminder |
| Western Isles | 25 | 0 | 0 | 0 | Yes | On request, but childminders not available in all areas |
| Total | 4768 | 773 | 156 | 196 | | |
| % of Childminding Workforce | | 16.2 | 3.3 | | | |

* Source: Care Inspectorate, August 2019

** Highland figures include all Grade 3 and above (current local policy prior to implementation of the National Standard in August 2020).

Appendix I(b): CHILDMINDERS PROVIDING FUNDED ELC HOURS IN SCOTLAND - JULY 2019: Three and four-year olds

| Local authority area | No. of childminders operating in each local authority area as at July 2019* | No. of childminders approved to deliver funded hours for three and four-year olds | No. of childminders currently delivering funded hours for three and four-year olds | No. of three and four-year olds currently placed with these childminders | Do you give parents the option of a childminding place for three and four-year olds? | Open choice or only if there are no nursery places available (NNPA) |
|------------------------------------|---|---|--|--|--|---|
| Aberdeen City | 161 | 4 | 0 | No response | No response | No response |
| Aberdeenshire | 321 | 66 | 29 | 2 | Yes | Open |
| Angus | 151 | 0 | 2 | 3 | No | No |
| Argyll and Bute | 74 | 16 | 16 | 15 | Yes | Open |
| Clackmannanshire | 53 | 12 | 1 | 1 | Yes | Open |
| Dumfries and Galloway | 111 | 26 | 27 | 32 | Yes | Open |
| Dundee | 133 | 0 | 0 | 0 | No | n/a |
| East Ayrshire | 175 | 23 | 11 | 41 | Yes | Open |
| East Dunbartonshire | 120 | 3 | 3 | 1 | Yes | Open |
| East Lothian | 120 | No response | No response | No response | No response | No response |
| East Renfrewshire | 131 | 11 | 0 | 0 | Yes | Open |
| Edinburgh City | 335 | 14 | 10 | 17 | Yes | Open |
| Falkirk | 190 | 40 | No response | 10 | Yes | Open |
| Fife | 421 | 0 | 0 | No response | No | n/a |
| Glasgow City | 173 | 45 | 7 | 5 | Yes | No |
| Highland** | 240 | 16 | 10 | 16 | Yes | Open |
| Inverclyde | 56 | 14 | 7 | 9 | No | Not currently |
| Midlothian | 85 | 41 | 16 | 43 | Yes | Open |
| Moray | 113 | 15 | 2 | 2 | Yes | Open |
| North Ayrshire | 174 | 3 | No response | 3 | No (from 2020) | Open |
| North Lanarkshire | 315 | 113 | No response | 109 | Yes | Open |
| Orkney Islands | 24 | 3 | 3 | 5 | Yes | Open |
| Perth and Kinross | 153 | 2 | No response | 1 | Yes | Open |
| Renfrewshire | 81 | 19 | 0 | 0 | Yes | n/a |
| Scottish Borders | 98 | 10 | 8 | 16 | Yes | Open |
| Shetland Islands | 13 | 6 | 3 | 22 | Yes | Open |
| South Ayrshire | 86 | 1 | 1 | 0 | Yes | Open |
| South Lanarkshire | 261 | 23 | 4 | 3 | Yes | Open |
| Stirling | 102 | 42 | 21 | 33 | Yes | Open |
| West Dunbartonshire | 41 | 7 | 0 | 0 | Yes | Open |
| West Lothian | 232 | 24 | 18 | 24 | For the pilot, childminders identified children currently attending their service and whose parents wished the child to continue at that setting | - |
| Western Isles | 25 | 0 | 0 | 0 | Not at present | - |
| Total | 4768 | 599 | 199 | 404 | | |
| % of Childminding Workforce | | 12.6 | 4.2 | | | |

* Source: Care Inspectorate, August 2019

** Highland figures include all Grade 3 and above (current local policy prior to implementation of the National Standard in August 2020).

Appendix 2(a):A COMPARISON OF THE NUMBER OF CHILDMINDING SERVICES IN SCOTLAND: JULY 2018 vs JULY 2019

| Local authority area | No. of childminders in each local authority area as at July 2018* | No. of childminders in each local authority area as at July 2019** | Change in no. of childminders in each local authority area | Percentage change (%) in no. of childminders in each local authority area |
|----------------------|--|---|---|--|
| Aberdeen City | 167 | 161 | -6 | -3.6 |
| Aberdeenshire | 348 | 321 | -27 | -7.8 |
| Angus | 158 | 151 | -7 | -4.4 |
| Argyll & Bute | 71 | 74 | 3 | 4.2 |
| Clackmannanshire | 59 | 53 | -6 | -10.2 |
| Dumfries & Galloway | 117 | 111 | -6 | -5.1 |
| Dundee | 154 | 133 | -21 | -13.6 |
| East Ayrshire | 179 | 175 | -4 | -2.2 |
| East Dunbartonshire | 132 | 120 | -12 | -9.1 |
| East Lothian | 125 | 120 | -5 | -4.0 |
| East Renfrewshire | 138 | 131 | -7 | -5.1 |
| Edinburgh City | 350 | 335 | -15 | -4.3 |
| Falkirk | 200 | 190 | -10 | -5.0 |
| Fife | 442 | 421 | -21 | -4.8 |
| Glasgow City | 163 | 173 | 10 | 6.1 |
| Highland | 276 | 240 | -36 | -13.0 |
| Inverclyde | 59 | 56 | -3 | -5.1 |
| Midlothian | 93 | 85 | -8 | -8.6 |
| Moray | 118 | 113 | -5 | -4.2 |
| North Ayrshire | 180 | 174 | -6 | -3.3 |
| North Lanarkshire | 325 | 315 | -10 | -3.1 |
| Orkney | 30 | 24 | -6 | -20.0 |
| Perth & Kinross | 167 | 153 | -14 | -8.4 |
| Renfrewshire | 88 | 81 | -7 | -8.0 |
| Scottish Borders | 103 | 98 | -5 | -4.9 |
| Shetland Isles | 14 | 13 | -1 | -7.1 |
| South Ayrshire | 97 | 86 | -11 | -11.3 |
| South Lanarkshire | 284 | 261 | -23 | -8.1 |
| Stirling | 107 | 102 | -5 | -4.7 |
| West Dunbartonshire | 46 | 41 | -5 | -10.9 |
| West Lothian | 248 | 232 | -16 | -6.5 |
| Western Isles | 26 | 25 | -1 | -3.8 |
| TOTAL | 5064 | 4768 | -296 | -5.8 |

* Source: Care Inspectorate, August 2018

** Source: Care Inspectorate, August 2019

Appendix 2(b): A COMPARISON OF CHILDMINDERS APPROVED BY LOCAL AUTHORITIES AND DELIVERING FUNDED ELC HOURS - JULY 2018 vs JULY 2019: Eligible two-year olds

| Local authority area | Childminders approved to deliver funded hours for eligible two-year olds as at July 2018 | Childminders approved to deliver funded hours for eligible two-year olds as at July 2019 | Childminders delivering funded hours for eligible two-year olds as at July 2018 | Childminders delivering funded hours for eligible two-year olds as at July 2019 |
|------------------------------------|--|--|---|---|
| Aberdeen City | 32 | 29 | 10 | 14 |
| Aberdeenshire | 22 | 66 | 2 | 29 |
| Angus | 27 | 5 | 1 | 4 |
| Argyll & Bute | 24 | 25 | 5 | 25 |
| Clackmannanshire | 13 | 12 | 4 | 4 |
| Dumfries & Galloway | 38 | 41 | 4 | 14 |
| Dundee | 2 | 2 | 2 | 2 |
| East Ayrshire | 39 | 29 | 9 | 7 |
| East Dunbartonshire | 11 | 3 | 0 | 3 |
| East Lothian | 2 | No response | 2 | No response |
| East Renfrewshire | 0 | 11 | 0 | 0 |
| Edinburgh City | 7 | 14 | 2 | 0 |
| Falkirk | 0 | 1 | 0 | No response |
| Fife | 0 | 5 | 0 | 1 |
| Glasgow City | 39 | 45 | 9 | 13 |
| Highland | 8 | 17 | 9 | 17 |
| Inverclyde | 10 | 0 | 0 | 0 |
| Midlothian | 10 | 41 | 4 | 5 |
| Moray | 18 | 21 | 5 | 1 |
| North Ayrshire | 88 | 88 | 44 | No response |
| North Lanarkshire | 82 | 113 | 13 | No response |
| Orkney | 3 | 3 | 0 | 0 |
| Perth & Kinross | 0 | 2 | 0 | No response |
| Renfrewshire | 0 | 19 | 0 | 0 |
| Scottish Borders | 30 | 32 | 6 | 4 |
| Shetland Isles | 2 | 6 | 3 | 3 |
| South Ayrshire | 1 | 1 | 1 | 0 |
| South Lanarkshire | 1 | 23 | 4 | 0 |
| Stirling | 39 | 42 | 3 | 2 |
| West Dunbartonshire | 0 | No response | 0 | 0 |
| West Lothian | 80 | 77 | 2 | 8 |
| Western Isles | 11 | 0 | 0 | 0 |
| TOTAL | 639 | 773 | 144 | 156 |
| % of Childminding Workforce | 12.6 | 16.2 | 2.8 | 3.3 |

Data note: Highland figures include all Grade 3 and above (current local policy prior to implementation of the National Standard in August 2020).

Appendix 2(c):A COMPARISON OF CHILDMINDERS APPROVED BY LOCAL AUTHORITIES AND DELIVERING FUNDED ELC HOURS - JULY 2018 vs JULY 2019:Three and four-year olds

| Local authority area | Childminders approved to deliver funded hours for three and four-year olds as at July 2018 | Childminders approved to deliver funded hours for three and four-year olds as at July 2019 | Childminders delivering funded hours for three and four-year olds as at July 2018 | Childminders delivering funded hours for three and four-year olds as at July 2019 |
|------------------------------------|--|--|---|---|
| Aberdeen City | 0 | 4 | 0 | 0 |
| Aberdeenshire | 0 | 66 | 0 | 29 |
| Angus | 1 | 0 | 1 | 2 |
| Argyll & Bute | 4 | 16 | 4 | 16 |
| Clackmannanshire | 13 | 12 | 0 | 1 |
| Dumfries & Galloway | 6 | 26 | 6 | 27 |
| Dundee | 0 | 0 | 0 | 0 |
| East Ayrshire | 0 | 23 | 0 | 11 |
| East Dunbartonshire | 11 | 3 | 0 | 3 |
| East Lothian | 2 | No response | 2 | No response |
| East Renfrewshire | 0 | 11 | 0 | 0 |
| Edinburgh City | 7 | 14 | 6 | 10 |
| Falkirk | 0 | 40 | 0 | No response |
| Fife | 0 | 0 | 0 | 0 |
| Glasgow City | 0 | 45 | 0 | 7 |
| Highland | 7 | 16 | 4 | 10 |
| Inverclyde | 0 | 14 | 0 | 7 |
| Midlothian | 10 | 41 | 8 | 16 |
| Moray | 0 | 15 | 0 | 2 |
| North Ayrshire | 0 | 3 | 0 | No response |
| North Lanarkshire | 0 | 113 | 0 | No response |
| Orkney | 3 | 3 | 3 | 3 |
| Perth & Kinross | 0 | 2 | 0 | No response |
| Renfrewshire | 0 | 19 | 0 | 0 |
| Scottish Borders | 8 | 10 | 8 | 8 |
| Shetland Isles | 2 | 6 | 2 | 3 |
| South Ayrshire | 1 | 1 | 0 | 1 |
| South Lanarkshire | 5 | 23 | 3 | 4 |
| Stirling | 39 | 42 | 10 | 21 |
| West Dunbartonshire | 0 | 7 | 0 | 0 |
| West Lothian | 0 | 24 | 0 | 18 |
| Western Isles | 0 | 0 | 0 | 0 |
| TOTAL | 119 | 599 | 57 | 199 |
| % of Childminding Workforce | 2.3 | 12.6 | 1.1 | 4.2 |

Appendix 3:

ADDITIONAL INFORMATION

| Local authority area | If you are not commissioning places with childminding services, when do you anticipate these will start? | Have you carried out any Impact Assessments in relation to your investment, policy or workforce recruitment decisions, and the impact they may have on the sustainability and competitiveness of childminding services in your local authority area? | If so can you share this information? | Is there anything you would like to add to the full report on the current state of childminding services in Scotland? |
|--------------------------------|---|---|--|--|
| Aberdeen City | - | - | - | - |
| Aberdeenshire | n/a | - | - | Potentially 36 additional childminders on board for August this year. All Childminders contracts will end July 2020. Work commencing very shortly for advertising childminders to apply under the new National Standards ready to start August 2020. |
| Angus | Following the success of our Forfar Pilot we are now in a position to offer 540 hours of funded ELC, with a childminder, for any Eligible two year-old in Angus. This is in preparation for "free choice" in 2020. The childminder needs to undertake our process to become an approved provider. | No | n/a | In Angus we are committed to supporting childminders, through training, meetings and funding of SVQ 3 qualifications. These will enable them to become funded providers and continue to provide a high quality service. |
| Argyll & Bute | n/a | Not at the moment. | - | - |
| Clackmannanshire | n/a | - | - | - |
| Dumfries & Galloway | n/a | No | n/a | - |
| Dundee | See numbers approved | No | n/a | - |
| East Ayrshire | n/a | No | - | - |

| Local authority area | <i>If you are not commissioning places with childminding services, when do you anticipate these will start?</i> | <i>Have you carried out any Impact Assessments in relation to your investment, policy or workforce recruitment decisions, and the impact they may have on the sustainability and competitiveness of childminding services in your local authority area?</i> | <i>If so can you share this information?</i> | <i>Is there anything you would like to add to the full report on the current state of childminding services in Scotland?</i> |
|-----------------------------------|--|--|---|---|
| <i>East Dunbartonshire</i> | n/a | We intend to review the impact of the blended model around August 2019; this will inform scale up for 2019/20. | We can share this once complete if you require. | It is a very worthwhile service and option, especially for children that require smaller setting. The challenges around different working patterns for different childminders result in complicated calculations for ensuring 1140 hours is received (without resulting in charges). There have been challenges around many aspects of the pilot blended childminding model in terms of administering, safeguarding, training, sharing learning with centres. |
| <i>East Lothian</i> | No response | No response | No response | No response |
| <i>East Renfrewshire</i> | This has just been completed in readiness for the term August 2019-2020 | No | n/a | East Renfrewshire Council is delighted to work in partnership with local childminders and has commissioned SCMA to deliver bespoke training which will supplement a full package of support from the ELC team. |
| <i>Edinburgh City</i> | n/a | No | n/a | We will continue to have information evenings (2019-2020) to encourage more childminders to apply to come in to partnership. |
| <i>Falkirk</i> | n/a | No | - | no |
| <i>Fife</i> | - | - | - | - |
| <i>Glasgow City</i> | More formally from August 2019 through SCMA | Don't know | - | - |

| Local authority area | If you are not commissioning places with childminding services, when do you anticipate these will start? | Have you carried out any Impact Assessments in relation to your investment, policy or workforce recruitment decisions, and the impact they may have on the sustainability and competitiveness of childminding services in your local authority area? | If so can you share this information? | Is there anything you would like to add to the full report on the current state of childminding services in Scotland? |
|-----------------------------|---|---|--|--|
| Highland | n/a | No | n/a | Highland Council are fully committed to being provider neutral and are therefore working with childminders to help and support them through the commissioning process, HC hold childminder workshops to enable childminders to complete the PEP. |
| Inverclyde | August 2020 | No | - | We are currently working with and are fully engaged with the childminding network in Inverclyde. |
| Midlothian | - | - | - | - |
| Moray | n/a | No impact assessment has been carried out. | n/a | - |
| North Ayrshire | 2020 | - | - | - |
| North Lanarkshire | n/a | No | n/a | No |
| Orkney | - | No | n/a | - |
| Perth & Kinross | August 2019 | Environmental Impact Assessments were made in the early stages of the development of PKC's ELC Expansion Plan. | https://bit.ly/2WuVdws https://bit.ly/2EZPvZ0 | - |
| Renfrewshire | We recently undertook a procurement exercise for ELC providers to apply onto our Framework for Early Learning and Childcare places to deliver ELC from August 2019 for the academic session. Currently 19 childminders have been recommended for conditional award of place on the Framework. | Further information to be confirmed | - | - |

| Local authority area | If you are not commissioning places with childminding services, when do you anticipate these will start? | Have you carried out any Impact Assessments in relation to your investment, policy or workforce recruitment decisions, and the impact they may have on the sustainability and competitiveness of childminding services in your local authority area? | If so can you share this information? | Is there anything you would like to add to the full report on the current state of childminding services in Scotland? |
|-----------------------------|---|---|--|---|
| Scottish Borders | n/a | - | - | In Scottish Borders, childminders, along with all other early years providers, are able to tender to provide ELC year olds each year. The tender process is currently open for providers to join the list to provide from August 2020. 39 children have enrolled with childminders for ELC3-4 from August 2019. |
| Shetland Isles | n/a | No | n/a | No |
| South Ayrshire | - | Nothing specifically related to childminders | - | - |
| South Lanarkshire | n/a | - | - | - |
| Stirling | - | - | - | - |
| West Dunbartonshire | August 2019 | No | - | No |
| West Lothian | There is an ELC pilot planned for August 19 | Not yet | Not yet | - |
| Western Isles | As soon as possible. We have two childminders who have enquired about providing ELC and we will be working with them over the summer to put arrangements in place | No | - | We only have a small number of childminders in the Western Isles and these childminders are in general very busy offering care for babies and toddlers and primary-age children after school. We have had very little interest from childminders wishing to partner with us to deliver ELC but will follow up now with the who have noted interest and will hopefully be able to offer this service next session. |



Scottish Childminding Association
7 Melville Terrace, Stirling FK8 2ND

Tel: **01786 445377**

Email: **information@childminding.org**

Website: **childminding.org**



Follow us @ScotChildmind on Facebook and Twitter



Scottish Government
Riaghaltas na h-Alba
gov.scot

We acknowledge the support of the Scottish Government
through a CYPFEIF and ALEC Fund Grant.

The Scottish Childminding Association is a Company Limited by Guarantee, registered in Scotland.
Registered Charity No SC010489. Limited Company No 144696

All materials © Scottish Childminding Association 2019